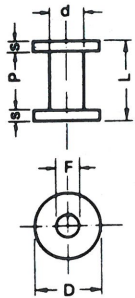


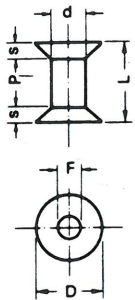
# IMBALLI PACKINGS

## ROCCHETTI CILINDRICI PER FILI CYLINDRICAL PLASTIC SPOOLS FOR WIRES



Tipo Type	Ø mm		D	L	P	d	F	S	Contenuto medio* Average content kg	
IEC 100	0,01	0,04	100	100	80	63	16	10	1,5	
IEC 125	0,03	0,05	125	125	100	80	16	12,5	2,6	
IEC 160	0,05	0,224	160	160	128	100	22	16	6,0	
IEC 200	0,08	0,56	200	200	160	125	22	20	12,0	
IEC 250	0,63	2,00	250	200	160	160	22	20	24,0	
IEC 355	≥2,00		355	200	160	224	36	20	40,0	
IEC 500	≥3,00		500	250	180	315	36	35	90,0	

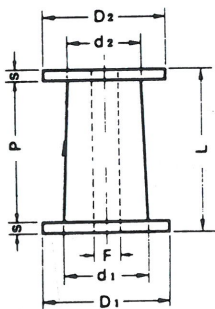
## ROCCHETTI BICONICI PER FILI BICONICAL SPOOLS FOR WIRES



Tipo Type	Ø mm		D	L	P	d	F	S	Contenuto medio* Average content kg	
IEC 76/45	0,01	0,032	63	86	60	45	16	13	0,18	
IEC 100/45	0,01	0,04	100	100	63	50	16	18	1,15	
IEC 125/45	0,03	0,05	125	125	80	63	16	22	2,00	
IEC 160/45	0,05	0,224	160	160	100	80	22	30	4,50	
IEC 200/45	0,08	0,224	200	200	125	100	22	37	9,00	

per alte velocità di avvolgimento (for high winding speed)

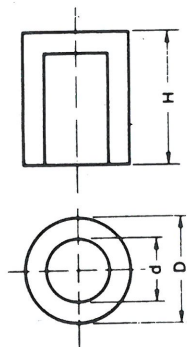
## ROCCHETTI CONICI PER FILI CONICAL PLASTIC SPOOLS FOR WIRES



Tipo Type	Ø mm		D1	D2	d1	d2	L	P	F	S	Contenuto medio* Average content kg	
IEC 200/315	0,08	0,30	200	190	125	112	315	265	100	25	20	
IEC 250/400	0,10	0,80	250	236	160	140	400	355	100	32,5	45	
IEC 315/500	0,30	2,00	315	300	200	180	500	425	100	37,5	90	
IEC 400/630	0,30	2,00	400	375	250	224	630	530	100	50	180	
IEC 500/800	0,30	2,00	500	475	315	280	800	670	100	65	400	
IEC 630/1000	0,30	2,00	630	600	400	355	1000	850	100	75	750	

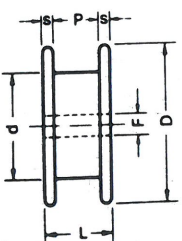
disponibili con campana (available with plastic container)

## CONTENITORI A FUSTI BUCKET PACKS



Tipo Type	Ø Filo Ø Wire mm		D	d mm	H	Contenuto medio Average content		
	minimo minimum	kg				medio average		
X3	0,45	1,50	510	360	410	70	100	100
X2	0,60	2,00	510	360	550	100	150	150
X1	0,60	2,00	510	360	760	150	200	200

## BOBINE PER ALTRI CONDUTTORI REELS FOR OTHER CONDUCTORS



Tipo Type	D	L	P	d	F	S	Contenuto massimo Maximum content kg
DIN 500	500	250	180	315	36	35	90
B600	600	200	140	370	43	30	100
B710	710	260	200	400	43	30	170
VM710	710	250	180	500	51	35	170
B70	1000	320	260	700	43	30	300
B70 M	1000	450	390	700	43	30	500
TS750/246	750	246	186	400	43	30	250
B760/356	760	356	296	400	43	30	500
B760/V	760	360	290	400	43	34	350

\* Contenuto minimo rocchetto = 30% contenuto medio.